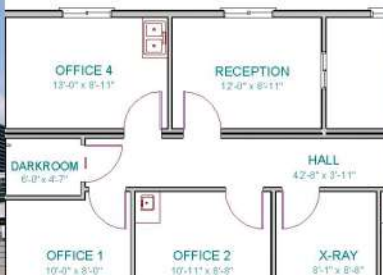


One stop shop for all your hospital
planning and management needs.

CONSULTING SERVICES



PRAXIS
A NEW DIMENSION TO HEALTH CARE



About Us

PRAXIS - The healthcare consulting arm of Jaipan Industries Ltd. provides solutions for all your healthcare business requirements. The company has an in-depth understanding of the healthcare market space, including economics of healthcare delivery, crucial success factors for new and existing hospital players, healthcare buying behavior, and hospital profitability making is a one stop shop for all hospital planning & management needs.

Praxis is a subsidiary of Jaipan industries Ltd., which is one of the largest companies involved in manufacturing of home and kitchen appliances and consumer durable products. It has a very strong presence since last 30 years in several countries like India, U.K., U.S.A., U.A.E, Oman, Saudi Arabia, Sri Lanka, Africa, Nepal, Bhutan, Egypt etc.

Our Team

Praxis is founded and headed by Dr. Rashi Agarwal and Mr. Atin Agarwal.

The strength of Praxis lies in our team of highly experienced consultants who are uniquely poised to deliver advisory services in all areas of hospital planning and operational management for new and existing healthcare facilities. The team members include clinicians, hospital administrators, hospital architects, biomedical engineers, healthcare marketing experts, human resource professionals, senior nurses, accreditation experts and financial experts.

Our customized approach allows us to assist healthcare participants ranging from small individual players to corporate establishments.

Our Mission

Praxis's mission is to assist healthcare organizations in providing high quality of care and maintaining a pattern of steady growth and profitability to achieve their competitive and financial realities through professionalism and ethical standards.

Our objective is to achieve faster market response and decision-making, increased performance, reduced costs, and strengthened competitive advantage for our healthcare clients.

- **Want to increase your hospital revenue ?**
- **Planning a hospital? Need the right hospital architecture and space planning?**
- **Want to expand an existing hospital and incorporate the latest technology and infrastructure?**
- **Need to plan the right medical equipment and furniture? Want to source it?**
- **Want to improve operational efficiency in your hospital?**
- **Looking for the right manpower and need to train them?**
- **Want to improve quality of care and accredit your hospital?**
- **Need to study your market or need industry benchmarks?**

PRAXIS.....A One stop shop for all your hospital planning and management needs!!!

Are you a single doctor wanting to set up a facility?

Are you a small nursing home trying to flourish?

Are you a diagnostic center looking to plan and market yourself?

Are you an existing hospital wanting to increase profits?

Are you a hospital with all the software but not being able to use it to the fullest?

.....PRAXIS works with big hospitals, smaller nursing homes, diagnostic set ups, individual doctor run set ups etc.



Services

A. Detailed Project Report- Financial Feasibility and Market Studies:

- Market study: determining the demand supply gap and aids choosing of area, size, speciality
- Financial Feasibility: details the profit loss statements, break-even point, revenue projections, and estimated capital and operational expenses

B. Project Management- Hospital Facility Planning

- Architectural layout and planning
- Space planning
- Complete project management
- Equipment planning
- Hospital Furniture and accessories

Biomedical Equipment Management

- Department / specialty wise, details of equipments (Medical & Non Medical) to be procured Technical comparison of major equipments
- Price range for various equipments
- Dealing options
- Warranty guidelines for equipment negotiations
- Guidelines with respect to contracts for technology procurement
- Vendor Selection and Management
- Vendor Contract Management

Furniture sourcing and planning

- Hospital beds: 5 function, 3 function and mechanical
- Disposables: Gowns, bed sheets, masks, etc.
- Accessory furniture: Medicine trolleys, crash carts, side tables, cabinets, etc.
- Patient Transfer: transfer trolleys, stretchers, wheel chairs

Commissioning of Hospitals and Healthcare Set ups:

- Developing Mission and Vision Statement
- Manpower planning and sourcing
- Setting up Standard Operating Procedures and Policies and execution
- Tariff rationalization

D Operational Audit and Operational Management for functional facilities

It involves provision of industry specific inputs with respect to daily operations of the hospital like:

- Average Length of Stay (ALOS)
- Bed Occupancy Rate (BOR), Operation theatre utilization
- Equipment phasing
- Critical care management
- Patient transfers
- Price points (competitor analysis) etc.



E. Human Resource Assistance

- Identifying the manpower needs
- Address specific hospital job profiles
- Training
- Benchmarking compensation and benefits and recommending employee retention strategies



F. Marketing support

- Developing marketing strategies to increase hospital revenues
- Execution of marketing strategies
- SWOT Analysis
- Defining your USP
- Website designing and online promotions, SEO, social networking
- Medical Tourism

G. Health Information Management System:

- Assistance in selection of appropriate HIMS
- Vendor Selection and Management
- Vendor Contract and Price Management

Hospital Accreditation/ Quality Initiatives: ISO 9001-2000, JCI, NABH

- Pre Assessment Survey
- Training of staff
- Documentation
- Implementation
- Analysis
- JCI/ NABH Application
- Final Survey



Training of staff

- Soft skill training for your front line staff
- Sales and marketing
- Process and documentation training for hospital staff by international accreditation standards to improve efficiency and reduce time
- Clinical training for nurses
- Technical training for laboratory technicians

Medical Tourism: www.treatmentoverseas.com



Our Clients



Jaipan Industries Limited, 17/1, cama Industrial Estate, Walbhatt Road,
Goregaon (East), Mumbai- 400 063, India/ - Tel : +91-22-61410000

WWW.PRAXISHC.COM